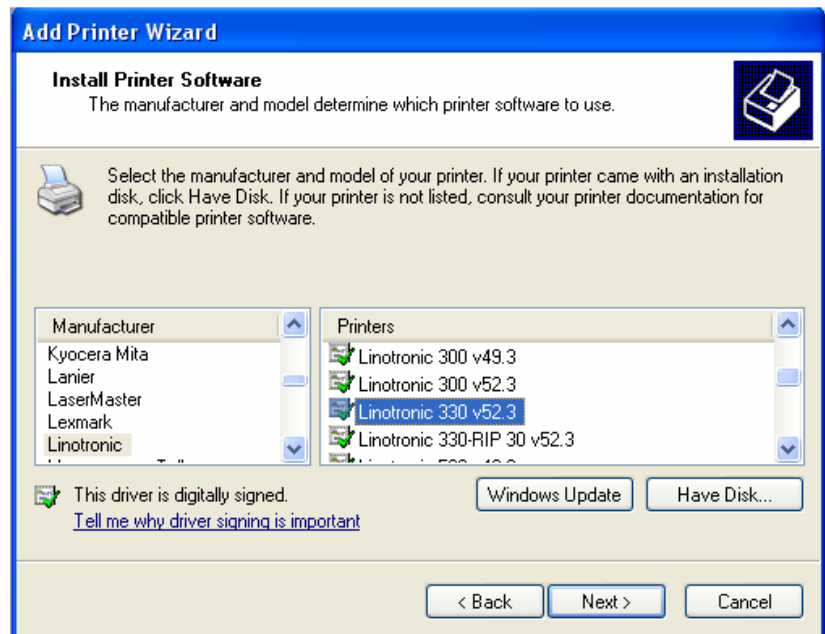


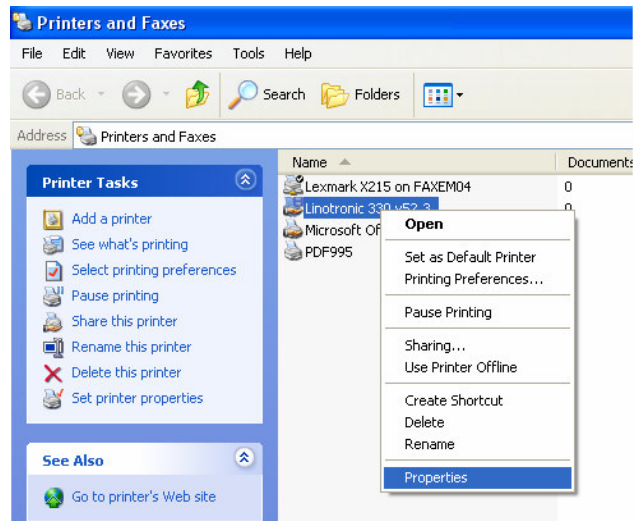
## Installing Linotronic Printer Driver for Windows XP

1.
  - Go to **Start** menu, select **Printers and Faxes**.
  - Go **Add a Printer**.
  - Go Next, select **Local printer attached to this computer**, un-tick **Automatically detect and install my plug and play printer**, Go Next.
  - Next select a Printer port, tick **Use the Following port** and select **FILE (Print to file)**, go Next.
  - Under **Install Printer Software**, in Manufacturer options choose **Linotronic**. In the Printers options choose the **Linotronic 330 v52.3**. Go Next.
  - If an existing Printer driver exists, and old driver is not in use, simply Replace existing driver. Go Next.
  - **Name your Printer**; simply call it Linotronic 330 v52.3. In the option that states 'Do you want to use this printer as a default printer' **Select NO**. Go Next.
  - Select **Do not share this printer**. Go Next. Select **NO** on the option to Print a test page. Go Next.
  - Click **Finish**.



2.

- In Printer and Faxes within Start Menu, **right click on Linotronic 330 52.3** printer option.
- Go **Properties**. Under the **General Tab**, click on **Printing preferences**.
- Under the **Layout Tab**, click on **Advanced option**.
- Under the **Graphics** options, select the **Print Quality to 635 dpi**.
- Under the **Document** options, under **Postscript** options, select **Postscript Output Option to Archive Format**. Under **Compress Bitmaps** select to **Yes**.
- Go OK.
- Go Apply.
- Go OK, then OK.



3.

Please contact your customer service team on **1300 667 355** if you cannot successfully upload your broadcast or if you have any general queries.